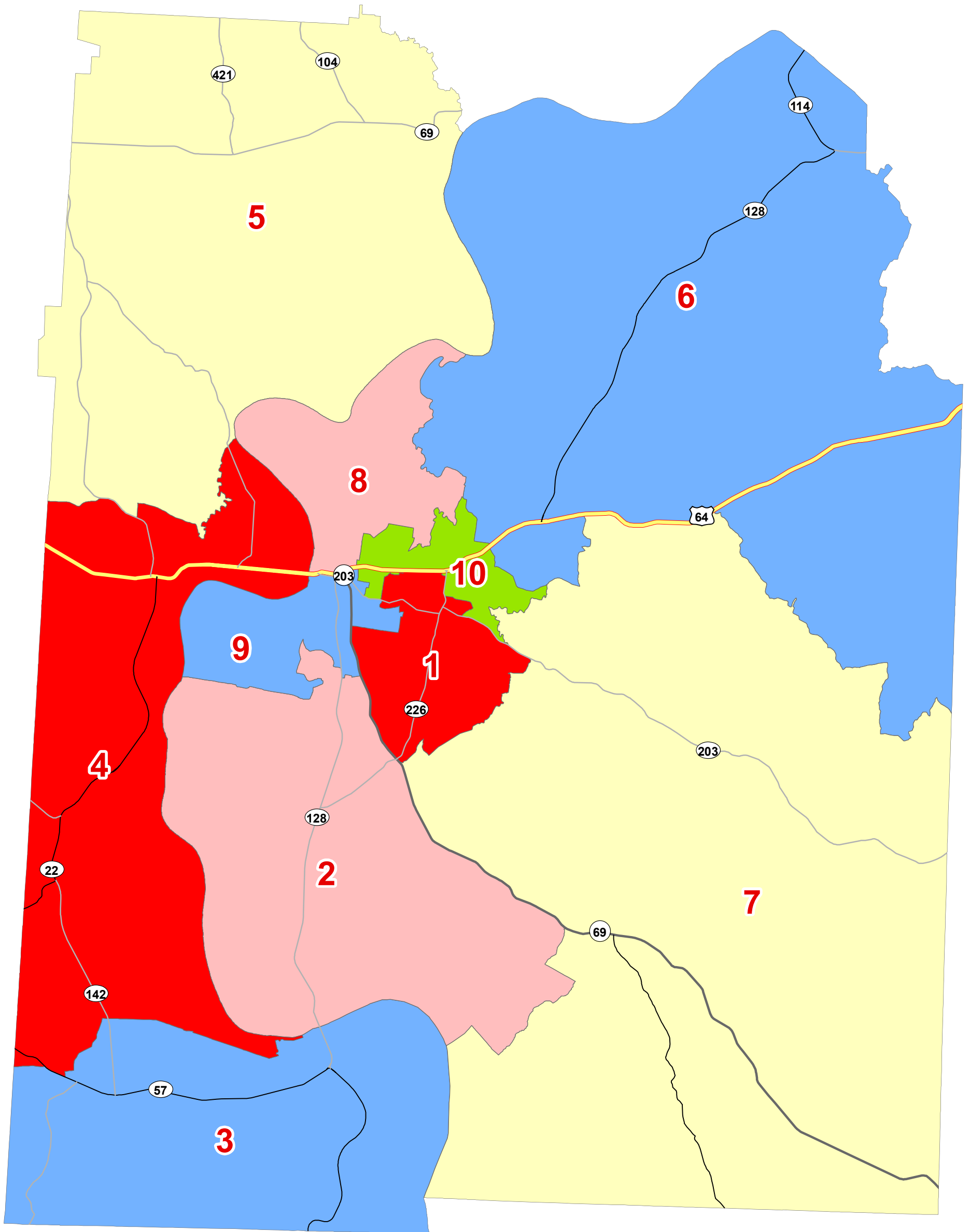


Hardin County Commission Districts and Population Summary



2020 Total population 26,831 based on 2020 Census
Overall Range [1.56- (-2.31)]=3.87%

DISTRICT	NUMCOMS	TOTALPOP	DEVIATION	%DEV	WHPOP	BLPOP	OTHERPOP	HISPOP	%WHPOP	%BLPOP
1	2	2,680	-3	-0.12%	2,423	81	176	79	90%	3%
2	2	2,718	35	1.3%	2,556	16	146	70	94%	1%
3	2	2,621	-62	-2.31%	2,472	32	117	48	94%	1%
4	2	2,691	8	0.29%	2,529	41	121	51	94%	2%
5	2	2,630	-53	-1.98%	2,375	89	166	46	90%	3%
6	2	2,683	0	0%	2,516	37	130	30	94%	1%
7	2	2,690	7	0.26%	2,527	39	124	67	94%	1%
8	2	2,681	-2	-0.08%	2,407	126	148	43	90%	5%
9	2	2,712	29	1.08%	2,286	176	250	78	84%	6%
10	2	2,725	42	1.56%	2,377	173	175	53	87%	6%

Table percentages may have been rounded.